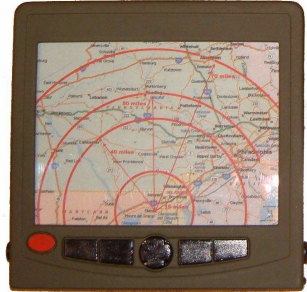


LT100 SOLDIER DIGITAL ASSISTANT (SDA)

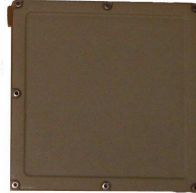
2.5" / 3.5" Display



Connection Block



Optional 6.4" Display



CPU Pack



Optional Expansion Pack

- Operating temperature - 30° C to + 70 ° C
- Genuinely Rugged with Environmental Performance to MIL STD 810
- Lightweight
- Immersion to 2 metres in water
- EMC to MIL STD 461
- Extremely Low Power
- Fully Sunlight Readable Screens
- Modular / User Selectable

The soldier of today has to carry large and often cumbersome loads. This EDO MBM TECHNOLOGY LTD product development is a highly innovative concept offering lightweight (<0.8Kg), compact size, very low power consumption yet extremely powerful computing. Ideally suited to high data rates and video processing.

A genuinely rugged product based on RISC 380MHz Superscaler PPC that offers many advantages over traditional small hand held computers. The LT100 SDA is a modular computer, which enables the user to select the required computing activity. For example, the base unit consists of a CPU, a user selectable interconnection block and a 2.5" / 3.5" VGA Transflective screen, which may be attached to the user's wrist. Alternatively, the CPU can be used with the screen in a "flip-down" mode or, as a more traditional hand held device.

The innovative design allows further functionality such as PCMCIA cards, memory modules or a larger capacity battery, by attaching additional units to the CPU.

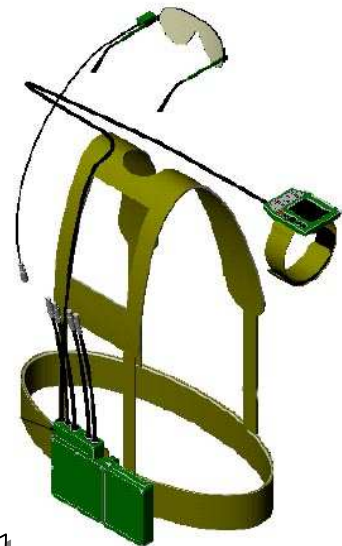
EDO MBM Technology Ltd

Rugged Systems Division
Emblem House, Home Farm Business Park
Home Farm Road, Brighton
East Sussex BN1 9HU
United Kingdom

Telephone: +44 (0)1273 810 500
Facsimile: +44 (0)1273 810 600
Email: sales@edombmrugged.com

www.edombmrugged.com

PRELIMINARY
SPECIFICATION



EDO mBM
TECHNOLOGY LIMITED

A member of the EDO Corporation

LT100 SOLDIER DIGITAL ASSISTANT (SDA)

Environmental

Temperature	Operating	-30 to +70 °C	MIL-STD-810E
	Storage	-40 to +75 °C	
Humidity		100% non condensing	MIL-STD-810E
Rain/Immersion		Watertight to 2m	MIL-STD-810E
Drop onto Concrete		0.5 m	MIL-STD-810E

Physical

Size (mm)	CPU	100mm x 100mm x 25mm
	Interconnection Block	
	Screen	2.5 inch QVGA
Weight	Typical	0.8 Kg

Electrical Interface

Power Consumption		< 3 watts
Battery		3 hours standard. Other options available
Interface Options		USB, Serial
Interconnection Block	Standard is:	Cable A to Screen, Cable B to Radio, Cable C to Camera, Cable D to System Battery, Cable E to options
Additional I/O Block	Options:	PCMCIA, Extra Battery, Storage and Memory Devices

Performance

Processor MK1	Superscaler PPC	RISC 266-380MHz with pure dynamic clocking for power saving
Processor MK2	Superscaler PPC	RISC 400-760MHz with pure dynamic clocking for power saving
Memory		Non Volatile 32MB Flash (expandable)
		Disk on Chip 64MB (expandable)
		SDRAM 32MB (expandable to 1GB)
Operating System		Linux (options: QNX, VX Works, CE*)

Screen Options

2.5 inch	QVGA	176 x 220	touch screen fully sunlight readable
3.5 inch	VGA	640 x 480	touch screen fully sunlight readable transfective
6.4 inch	VGA	640 x 480	touch screen fully sunlight readable

ЗАО "ЭлекТрейд-М"
121248, Россия, Москва,
Кутузовский проспект, д. 7/4, корп. 6, офис 50
Телефон/факс: +7-(095)-974-14-80
E-mail: info@eltn.ru
http://www.eltn.ru

**PRELIMINARY
SPECIFICATION**